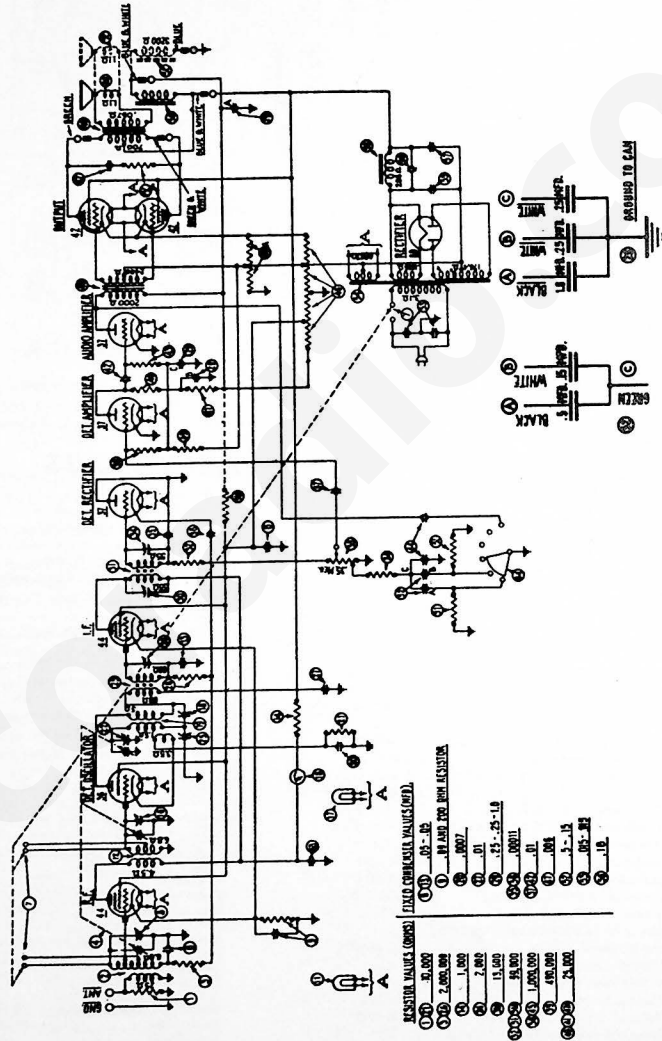


MODELS 14 AND 91



RESISTOR VALUES (OHMS)

1	50,000
2	100,000
3	200,000
4	500,000
5	1,000,000
6	2,000,000
7	5,000,000
8	10,000,000
9	20,000,000
0	50,000,000
1	100,000,000
2	200,000,000
3	500,000,000
4	1,000,000,000

INDUCTOR VALUES (MICROHENRIES)

1	0.001
2	0.002
3	0.005
4	0.01
5	0.02
6	0.05
7	0.1
8	0.2
9	0.5
0	1.0
1	2.0
2	5.0
3	10.0
4	20.0
5	50.0
6	100.0
7	200.0
8	500.0
9	1000.0

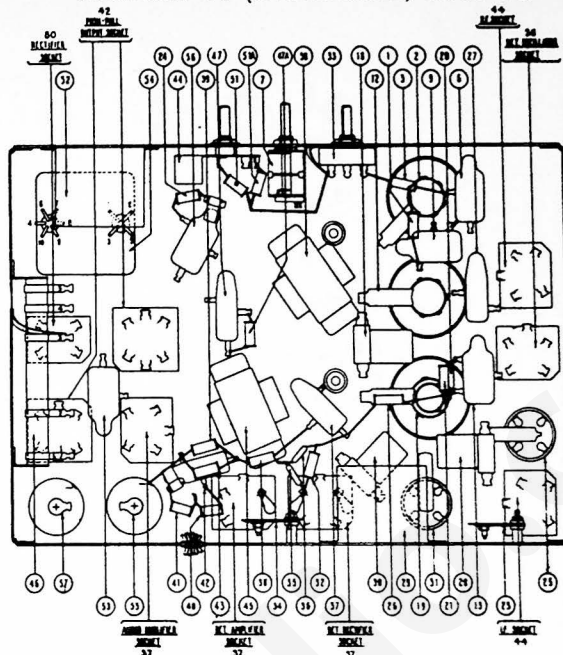
CONDENSATOR VALUES (MICROFARADS)

1	0.0001
2	0.0002
3	0.0005
4	0.001
5	0.002
6	0.005
7	0.01
8	0.02
9	0.05
0	0.1
1	0.2
2	0.5
3	1.0
4	2.0
5	5.0
6	10.0
7	20.0
8	50.0
9	100.0

WIRE GAUGES (MILLIMETERS)

1	0.1
2	0.2
3	0.3
4	0.4
5	0.5
6	0.6
7	0.8
8	1.0
9	1.2
0	1.5
1	2.0
2	2.5
3	3.0
4	4.0
5	5.0
6	6.0
7	8.0
8	10.0
9	12.0

MODEL 3 14 (CODE 221-2) AND 91



REPLACEMENT PARTS

No. on Figs.	Description	Part No.	No. on Figs.	Description	Part No.
①	Resistor (Brown-Black-Orange)	4412	④	Resistor (Brown-Black-Green)	4409
②	R.F. Transformer	32-1069	④a	Tone Control	06698
③	Resistor (Red-Black-Green)	5872	④b	Push-Pull Input Transformer	6064
④	Tuning Condenser Assembly	04790	④c	B.C. Resistor (Wire Wound)	6702
⑤	Compensating Cond. (R.F.) Part of ①		④d	B.C. Resist. (Wire Wound) Twin Speaker	6808
⑥	Condenser	3615-AM	⑤	Condenser	7625-B
⑦	"On-Off" and Frequency Switch	42-1002	⑤a	Resistor (Red-Green-Orange)	4516
⑧	Condenser (and Resistor)	6287-C	⑥	Push-Pull Output Trans. (Sing. Speaker)	2585
⑨	Pilot Lamp (Philco Scale)	6608	⑥a	Push-Pull Output Trans. (Twin Speaker)	2565
⑩	Detector Transformer	32-1070	⑥b	Voice Coil and Cone Assembly (K-6 and K-12)	02823
⑪	Condenser	3615-AJ	⑥c	Voice Coil and Cone Assembly (H-7) Twin Speaker Model	02807
⑫	Resistor (Brown-Black-Red)	5837	⑥d	Speaker Field Assembled with Pot (K-6 and K-12)	02803
⑬	Compensating Cond. (Detector) Part of ⑩		⑥e	Speaker Field Assembled with Pot (H-7) Twin Speaker Model	02803
⑭	Tuning Meter	6497	⑥f	Resistor (White-White-Orange)	4411
⑮	Pilot Lamp (Tuning Meter)	6608	⑥g	Resistor (White-White-Orange)	4411
⑯	Compensating Cond. (1st I.F. Primary)	04000-M	⑥h	Condenser Bank	06713
⑰	Oscillator Coil	05985	⑥i	Condenser (Double)	3793-E
⑱	Condenser (White and Yellow)	4520	⑥j	Power Trans. (50-60 cycles) Sing. Sp'ker	6554
⑲a	Resistor (Brown-Black-Orange)	4412	⑥k	Power Trans. (25-40 cycles) Sing. Sp'ker	6555
⑲b	Comp. Cond. (High Freq.) Part of ⑱		⑥l	Power Trans. (50-60 cycles) Twin Sp'ker	6804
⑲c	Compensating Condenser (Low Freq.)	04000-B	⑥m	Power Trans. (25-40 cycles) Twin Sp'ker	6805
⑲d	Resistor (Red-Black-Red)	6984	⑥n	Electrolytic Cond. (6 MFD) Sing. Sp'ker	4916
⑲e	First I.F. Transformer	04319	⑥o	Electrolytic Cond. (8 MFD) Twin Sp'ker	7464
⑲f	Resistor (Red-Black-Green)	5872	⑥p	Condenser	4989-T
⑲g	Condenser	3903-AE	⑶	Electrolytic Cond. (6 MFD) Sing. Sp'ker	4916
⑲h	Comp. Cond. (1st I.F. Secondary)	04030-M	⑶a	Electrolytic Cond. (8 MFD) Twin Sp'ker	7464
⑲i	Filter Condenser Bank	04830	⑶b	Filter Choke	4819
⑲j	Comp. Cond. (2d I.F. Primary)	04000-M	⑶c	Tube Shields	8005
⑲k	Second I.F. Transformer	04320	⑶d	Knob (Large)	03063
⑲l	Resistor (White-White-Orange)	4411	⑶e	Knob (Medium)	03064
⑲m	Volume Control	8054	⑶f	Knob (Small)	03437
⑲n	Comp. Cond. (2nd I.F. Secondary)	04000-M	⑶g	Four Prong Socket	5026
⑲o	Condenser (Blue and Golden Yellow)	4519	⑶h	Five Prong Socket	4956
⑲p	Condenser (Blue and Golden Yellow)	4519	⑶i	Six Prong Socket	6417
⑲q	Condenser	3903-P	⑶j	Dial, Complete	04832
⑲r	Resistor (Brown-Black-Green)	4409	⑶k	Bezel	6418
⑲s	Resistor (Yellow-White-Yellow)	4517			
⑲t	Resistor (Red-Green-Orange)	4516			
⑲u	Resistor (Red-Green-Orange)	4516			
⑲v	Condenser	3903-P			